



With their unmatched sense of style, elegance and grace, Seabourn luxury cruise ships beckon you to travel beyond the bounds of the imagination. On board Seabourn, every desire is met promptly and with a welcoming smile. You'll feel that you're a member of a very exclusive club when sailing on these luxury cruise ships. Each small ship cruise offers all ocean-front suites, luxuriously appointed accommodations, an open-bar policy serving premium wine, champagne and spirits, and a world-class dining experience.

Seabourn Encore is as strikingly beautiful and as excitingly innovative as any Seabourn has ever debuted. She crowns a fleet of luxury cruise ships that is already the newest, most modern and most acclaimed in the ultra-luxury segment.



SEABOURN®

ITINERARY:

- April 28/24 - Venice, Italy - Embarkation - Departs 5:00PM
- April 29 - Vodice (Sibenik), Croatia - 10:00AM - 6:00PM
- April 30 - Kotor, Montenegro - 8:00AM - 3:00PM. Cruising Bay of Kotor.
- May 1 - Kerkira, Nisos Kerkira (Corfu), Greece - 8:00AM - 6:00PM
- May 2 - Sami, Cephalonia, Greece - 8:00AM - 5:00PM
- May 3 - Day at Sea
- May 4 - Nafplion, Greece - 8:00AM - 5:00PM
- May 5 - Piraeus (Athens), Greece - Arrives 7:00AM - Disembarkation



Additional Benefits Include:

- Concierge Host Aboard
- Complimentary Exclusive Shore Excursion
- Welcome Cocktail Reception

With only 300 suites aboard the beautiful Seabourn Encore, be sure to contact us early to reserve your spot! Space is limited.

Veranda Suite - From \$4835CAD pp + taxes/fees

Located on Deck 5; total inside space of between 246 and 302 square feet (23 and 28 square meters) plus one veranda of between 68 and 83 square feet (6 and 7 square meters)

All Veranda Suites feature a full-length window and glass door to private veranda, comfortable living area, queen-size bed or two twin beds, dining table for two, walk-in closet, interactive flat-screen television with music and movies, fully stocked bar and refrigerator, makeup vanity, spacious bathroom with separate tub and shower.



Penthouse Suite - From \$8998CAD pp + taxes/fees

Located on Deck 10 and 11; total inside space of between 449 and 450 square feet (42 square meters) plus one veranda of between 93 and 103 square feet (9 and 10 square meters)

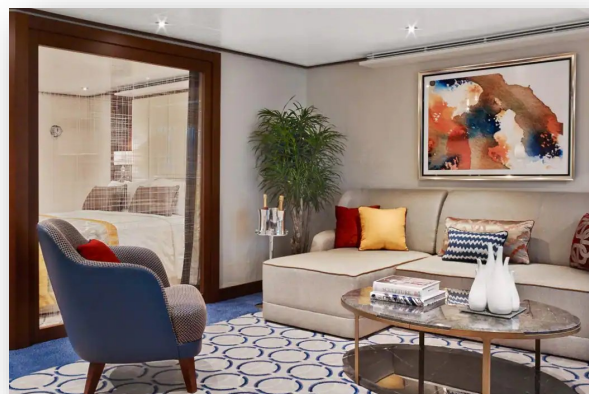
All Penthouse Suite feature dining table for two to four and separate bedroom. Glass door to veranda, two flat-screen TVs, fully stocked bar, spacious bathroom with tub, shower and large vanity.



Penthouse Spa Suite - From \$10,123CAD pp + taxes/fees

Located on Deck 11; total inside space of between 639 and 677 square feet (59 and 63 square meters) plus veranda of between 254 and 288 square feet (24 and 27 square meters)

All Penthouse Suites on board feature a comfortable living area, glass door to private veranda, queen-size-bed or two twin beds; walk-in closet with personal safe, two flat-screen TV with music and movies, fully stocked bar and refrigerator, writing desk with personalized stationary, makeup vanity, spacious bathroom with separate tub and shower, plush robes, slippers hair dryer and 110/220V AC outlets.



Hosted by Travel Industry Veteran, Ed Buchholz, an experienced cruiser, world traveller, avid golfer and wine connoisseur! He and his wife Karen are the perfect travel friends to make sure your experience is beyond your typical cruise vacation.



LEISURE TRAVEL 2000 INC

expect the world of us

539 Whitewood Cr. Saskatoon, SK. S7J 4L4
306.956.3000 | Toll Free: 1.877.956.3030
www.leisuretravel2000.ca

Call Sharon at Leisure Travel 2000 for more information and to book this great Luxury Cruise!

